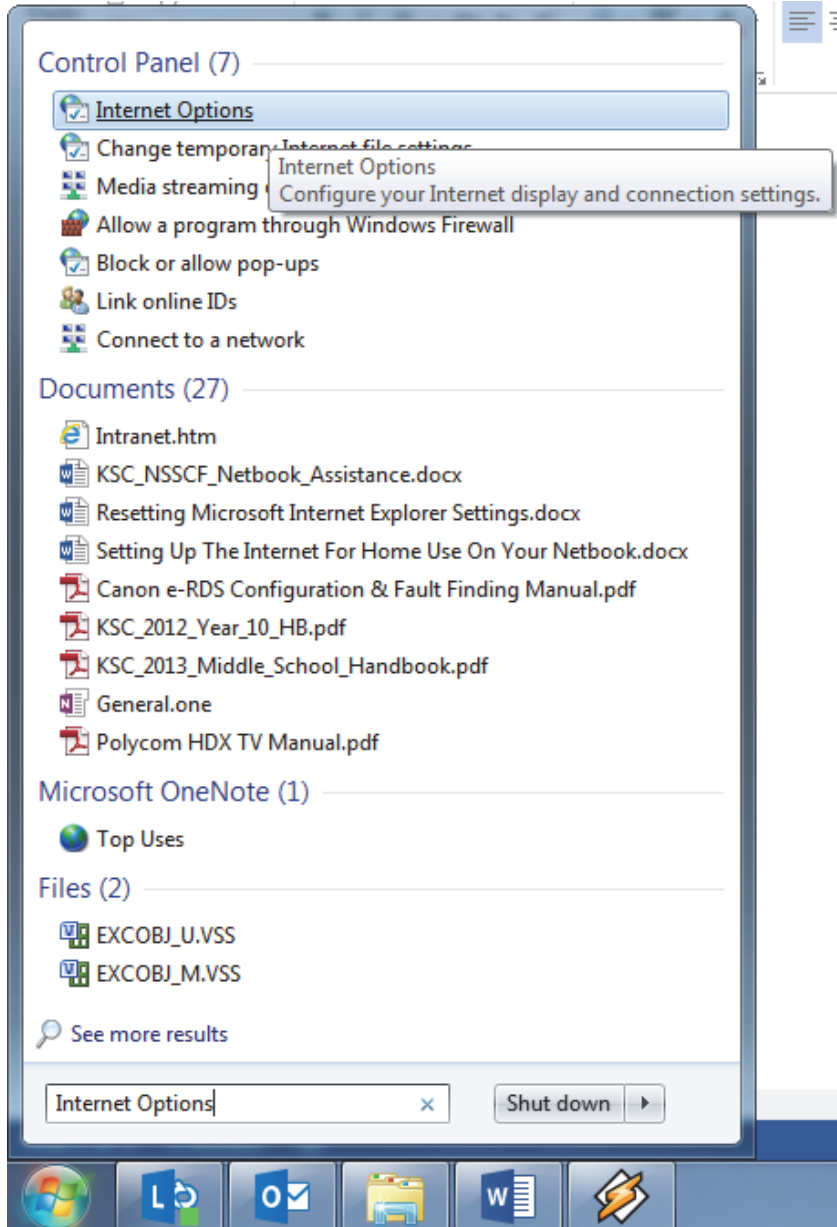


Netbook Settings Required To Connect Home Internet

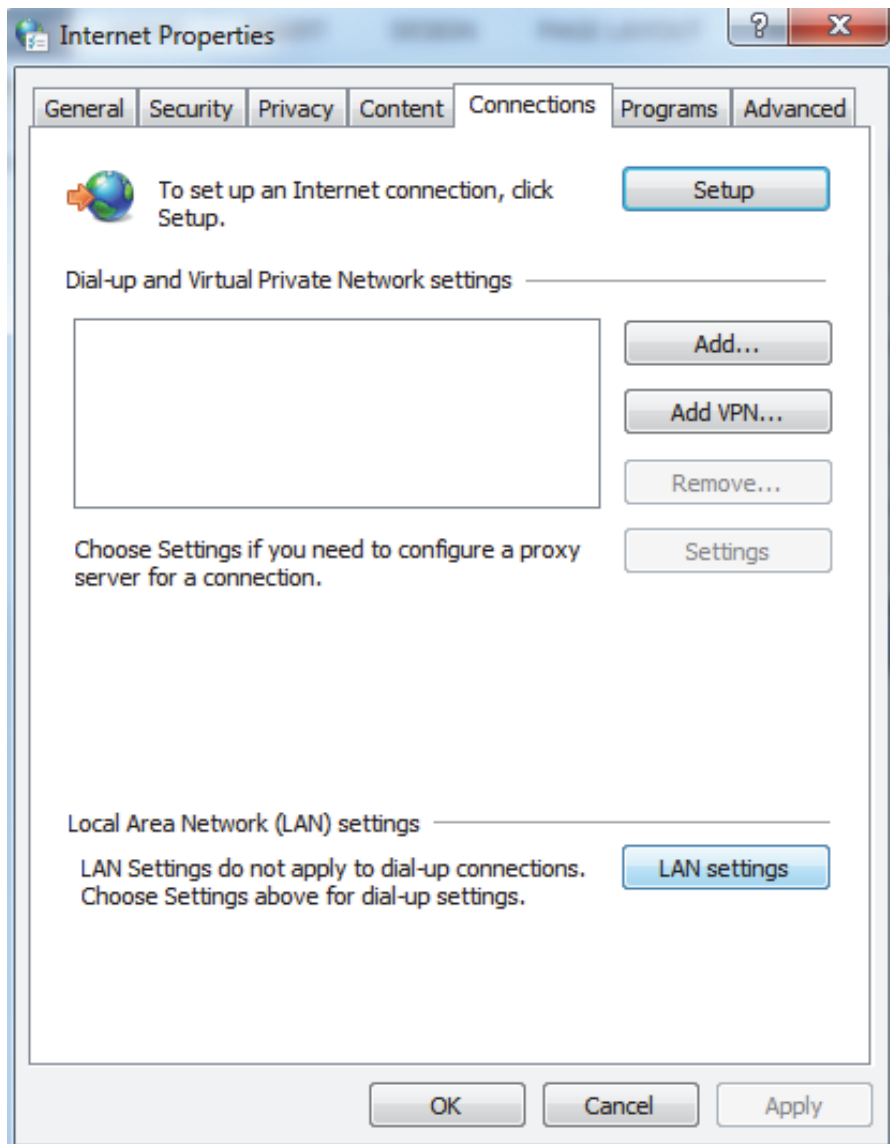
Click on the **Start Menu**



Search for the command titled **Internet Options**



Within **Internet Properties** go to **Connections** then **LAN Settings**



Within **Local Area Network (LAN) Settings** make sure:

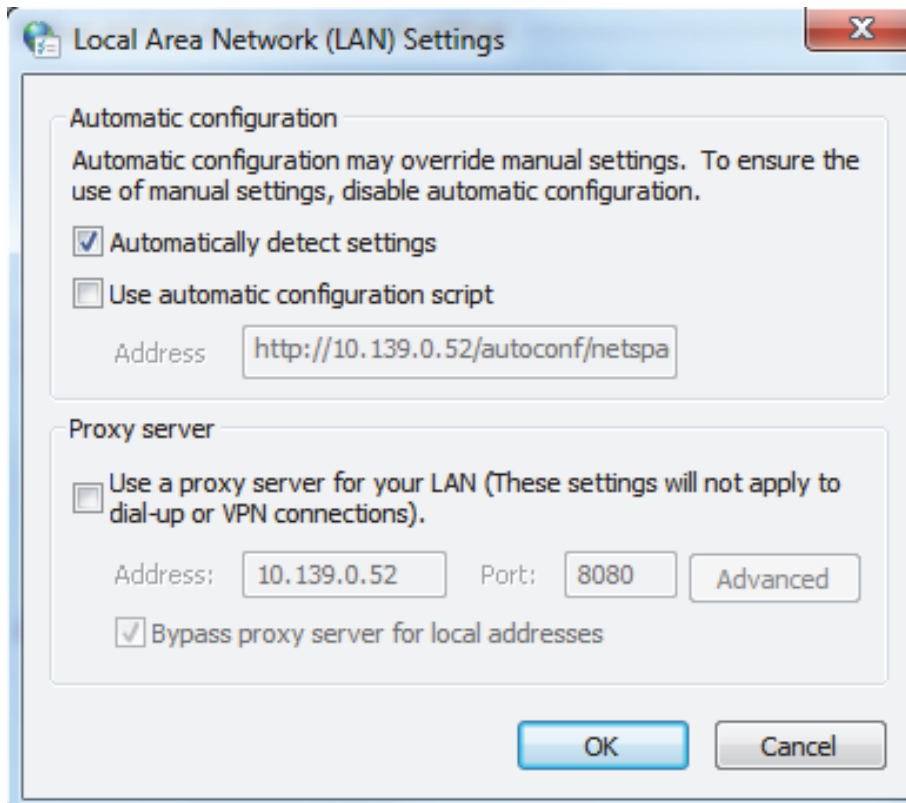
Automatically detect settings is **TICKED**

Use automatic configuration script is **UNTICKED**

Address: <http://10.139.0.52/autoconf/netspace>

Use a proxy server for your LAN is **UNTICKED**

Address: 10.139.0.52 Port: 8080



Select **OK**

Close Internet Options

Open Internet Explorer or Google Chrome